

# QUICK START GUIDE

Read this manual carefully and save it for future reference.

Lisez attentivement ce manuel et conservez-le pour référence future.

Lea este manual con atención y guárdelo para futuras consultas.

## GET BETTER SECURITY WITH Cam Plus

**Record Full-Length Videos**  
Get unlimited full-length video recordings.

**Smart AI Detection**  
Detect people, packages, vehicles, and more.

**Back-to-Back Event Recording**  
Capture everything without 5-minute gaps.

**Exclusive Discounts**  
Get exclusive discounts on Wyze products.

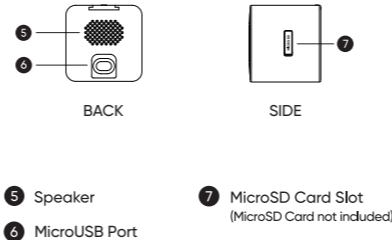
**Subscribe or learn more at [my.wyze.com](https://my.wyze.com).**

## IN THE BOX

Wyze Window Cam x1 Indoor Power Adapter x1  
USB Cable x1 Cable Clips x4  
Mounting Sticker x2 Quick Start Guide x1



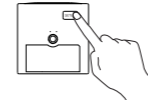
- 1 Lens
- 2 Status Light
- 3 Microphone
- 4 SETUP Button



- 5 Speaker
- 6 MicroUSB Port
- 7 MicroSD Card Slot (MicroSD Card not included)

## SETUP

- Download the Wyze app and sign in or create an account.
- Connect the camera to a power outlet and wait 20 seconds or until the status light flashes red.
- Press and release the SETUP button, then wait 3-5 seconds until there is a voice prompt.
- In the Wyze app, tap the + plus sign. On the Add menu, tap **Device > Cameras > Wired Cameras > Wyze Window Cam**. Follow the in-app instructions to finish setup.




*Only use the power supply provided.*

## LIGHT INDICATORS DURING INSTALLATION

-  **Solid red light**  
The device is powered on and initializing
-  **Flashing red light**  
The device is ready to connect
-  **Flashing red & blue lights**  
Connection is in progress
-  **Flashing blue light**  
The device is connected and finishing setup
-  **Solid blue light**  
The device is working properly

## LIGHT INDICATORS AFTER SETUP

-  **Solid red light**  
Live stream is being viewed or a recording is in progress
-  **Quickly flashing red light**  
Siren is in use
-  **Solid blue light**  
The device is working properly and no operations are running

## INSTALLATION

Install the camera on window glass only. Ensure that it's within reach of a power outlet and not too far from your router.

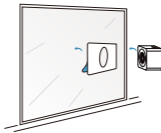
**Step 1:** Thoroughly clean and dry the inside and outside of the glass where you plan to mount the camera.



**Step 2:** Peel off the protective film from the Mounting Sticker.



**Step 3:** Affix the Mounting Sticker onto the window glass, then remove the protective film from the camera lens. Press the camera firmly onto the sticker to mount it. Ensure the camera is not at an angle.



**Step 4:** Use the included cable clips to route the power cable from the window to the nearest power outlet.

### Additional Notes :

- Affix the sticker horizontally to minimize the light behind the camera for the best image quality. Do not trim your mounting sticker.
- The mounting sticker is wide by design to reduce glare.
- Do not mount to a window with a screen.

## FCC WARNING:

Any changes or modifications not expressly approved by the party responsible for compliance could void the user's authority to operate this equipment. This device complies with part 15 of the FCC Rules. Operation is subject to the following two conditions: (1) This device may not cause harmful interference, and (2) This device must accept any interference received, including interference that may cause undesired operation. This equipment has been tested and found to comply with the limits for a Class B digital device, pursuant to Part 15 of the FCC Rules. These limits are designed to provide reasonable protection against harmful interference in a residential installation. This equipment generates, uses, and can radiate radio frequency energy and, if not installed and used in accordance with the instructions, may cause harmful interference to radio communications. However, there is no guarantee that interference will not occur in a particular installation. If this equipment does cause harmful interference to radio or television reception, which can be determined by turning the equipment off and on, the user is encouraged to try to correct the interference by one or more of the following measures:

- Reorient or relocate the receiving antenna.
- Increase the separation between the equipment and receiver.

- Connect the equipment into an outlet on a circuit different from that to which the receiver is connected.
- Consult the dealer or an experienced radio/TV technician for help.

## FCC RADIATION EXPOSURE STATEMENT:

This equipment complies with FCC radiation exposure limits set forth for an uncontrolled environment. This equipment should be installed and operated with minimum distance 20 cm between the radiator & your body. This transmitter must not be co-located or operating in conjunction with any other antenna or transmitter.

Supplier's Declaration of Conformity  
Unique Identifier  
Trade Name: WYZE Model No.: WYZECWC  
Responsible Party -- U.S. Contact Information  
US Company Name: Wyze Labs, Inc.  
Address: 8815 122nd Ave NE, Suite #201, Kirkland WA 98033  
[www.wyze.com/pages/contact-us](https://www.wyze.com/pages/contact-us)

## ISED RSS WARNING:

This device complies with ISEDC licence-exempt RSS standard(s). Operation is subject to the following two conditions: (1) this device may not cause interference, and (2) this device must accept any interference, including interference that may cause undesired operation of the device.

## ISED RADIATION EXPOSURE STATEMENT:

This equipment complies with ISEDC RF radiation exposure limits set forth for an uncontrolled environment. This transmitter must not be co-located or operating in conjunction with any other antenna or transmitter. This equipment should be installed and operated with a minimum distance of 20 cm between the radiator and your body. Only use the power supply provided. Any changes or modifications not expressly approved by the party responsible for compliance could void the user's authority to operate the equipment.

## WARRANTY

Your Wyze product is covered by a one-year limited warranty. You can view the limited warranty terms at <https://wyze.com/return-warranty-policy>

Apple logo and App Store are trademarks of Apple Inc., registered in the U.S. and other countries and regions. Google, Google Play, and the Google Play logo are trademarks of Google LLC.

Disclaimer: The products, accessories, user interfaces, etc. illustrated in this guide are intended for reference only. Due to product updates, the actual product and the illustrations in this guide may vary.

Wyze and Wyze Window Cam are trademarks of Wyze Labs, Inc.

## NEED HELP?

Contact our Support Team:  
<https://wyze.com/support>  
Join the Community:  
<https://wyze.com/community>



Scan the QR code to learn more