

# QUICK START GUIDE

Read this manual carefully and save it for future reference.

## GET BETTER SECURITY WITH Cam Plus

**Record Full-Length Videos**  
Get unlimited full-length video recordings.

**Smart AI Detection**  
Detect people, packages, vehicles, and more.

**Back-to-Back Event Recording**  
Capture everything without 5-minute gaps.




**Exclusive Discounts**  
Get exclusive discounts on Wyze products.

**Subscribe or learn more at [services.wyze.com](https://services.wyze.com).**

### IN THE BOX

Wyze Garage Door Controller × 1  
Wyze Cam v3 × 1  
QR Code Sticker × 1  
Adhesive Mounting Sticker × 1  
Warning Placard × 1  
5V 2A Power Adapter × 1  
Wyze Cam v3 Parts × 1  
Micro USB Split Cable × 1  
Cable Clips × 3  
Quick Start Guide × 1

## STATUS LIGHT GUIDE AFTER SETUP

-  **Solid red light**  
Live stream is being viewed or a recording is in progress
-  **Quickly flashing red light**  
Siren is in use
-  **Solid blue light**  
The device is working properly and no operations are running

## INSTALLATION INSTRUCTIONS FOR DOOR CONTROLLER OF RESIDENTIAL GARAGE DOOR OPERATORS AND SYSTEMS

### IMPORTANT INSTALLATION INSTRUCTIONS

**WARNING** – To reduce the risk of severe injury or death:

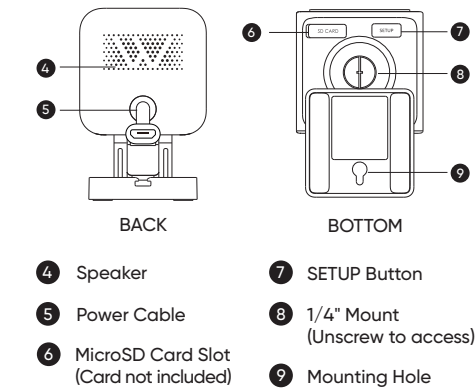
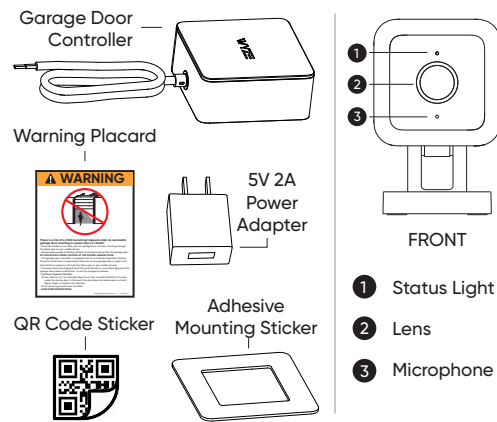
1. READ AND FOLLOW ALL INSTALLATION INSTRUCTIONS.
2. Do not connect the door operator and Garage door controller to source of power until instructed to do so.
3. Locate the Garage door controller: (a) within sight of the door, (b) at a minimum height of 1.53 m (5 ft) above floors, landings, steps or any other adjacent walking surface so small children are not able to reach it, and (c) away from all moving parts of the door.

## USER INSTRUCTIONS FOR DOOR CONTROLLER OF RESIDENTIAL GARAGE DOOR OPERATORS AND SYSTEMS

### IMPORTANT SAFETY INSTRUCTIONS

**WARNING** – To reduce the risk of severe injury or death:

1. READ AND FOLLOW ALL INSTRUCTIONS.
2. Never let children operate or play with door controls. Keep the remote control away from children.
3. Always keep the moving door in sight and away from people and objects until it is completely closed. NO ONE SHOULD CROSS THE PATH OF THE MOVING DOOR.
4. NEVER GO UNDER A STOPPED, PARTIALLY OPEN DOOR.
5. For operator systems equipped with an unattended operation feature, the following statement shall be included: "This operator system is equipped with an unattended operation feature. The door could move unexpectedly. NO ONE SHOULD CROSS THE PATH OF THE MOVING DOOR."
6. For products having an emergency release, when possible, use the emergency release only when the door is closed. Use caution when using this release with the door open. Weak or broken springs are capable of increasing the rate of door closure and increasing the risk of severe injury or death. Never connect the Garage door controller to any circuits for emergency release.
7. To reduce the risk of electric shock, this equipment has a polarized plug (one blade is wider than the other). This plug will fit in a polarized outlet only one way. If the plug does not fit fully in the outlet, reverse the plug. If it still does not fit, contact a qualified electrician to install the proper outlet. Do not change the plug in any way.
8. For use only with garage door operators complying with UL 325, manufactured after 1993.
9. For residential and indoor use only
10. SAVE THESE INSTRUCTIONS.



## SETUP

1. Download the Wyze app and sign in or create an account.
2. Connect the camera to a power outlet and wait for 20 seconds or until the status light flashes red.
3. Press the SETUP button for 3 seconds or until there is a voice prompt.
4. Open the Wyze app and tap the + sign in the top left corner of the Home tab. Tap **Add Device > Cameras > Wyze Garage Door Controller** and then follow the instructions.

## COMPATIBILITY

Check that your garage door opener is compatible before continuing with the installation process.  
- Make sure you have a strong Wi-Fi signal in your garage area for best performance.

Scan the QR code to use our Compatibility Checker to confirm that your garage door opener is compatible.  
Or visit our website at <https://wyze.com/garage-controller-compatibility>

\*Wyze Garage Door Controller is not compatible with Round Yellow Learn Buttons / Security+ 2.0 openers.




## CONTROLLER INSTALLATION

1. Remove the double-sided tape from the mounting sticker and stick it to the back cover of the controller.
  2. Remove the double-sided tape from the mounting sticker and stick it to your preferred mounting location.
  3. Connect the cables as shown below.
- 
4. Adhere the QR Code Sticker to the inside of your garage door. Please make sure the QR Code Sticker is on a flat surface on the door and has a clear view from the camera.  
**Note:** The camera uses the QR Code Sticker to detect the open/closed status of the garage door to provide features such as notifications, door event history, scheduling, etc.

5. Mount your Wyze Cam v3 and Wyze Garage Door Controller so that the camera points towards the QR Code Sticker.

6. Follow the in-app calibration steps to finish setup.

## STATUS LIGHT GUIDE DURING INSTALLATION

-  **Solid red light**  
The device is powered on and initializing
-  **Flashing red light**  
The device is ready to connect
-  **Flashing red and blue lights**  
Connection is in progress
-  **Flashing blue light**  
The device is connected and finishing setup
-  **Solid blue light**  
The device is working properly

## FCC RADIATION EXPOSURE STATEMENT

In order to comply with FCC radiation exposure limits this equipment must be installed and operated to provide at least 20 cm separation from the body at all times. This transmitter must not be co-located or operated in conjunction with any other antenna or transmitter.

## FCC WARNING

Any changes or modifications not expressly approved by the party responsible for compliance could void the user's authority to operate this equipment. This device complies with part 15 of the FCC Rules. Operation is subject to the following two conditions: (1) This device may not cause harmful interference, and (2) this device must accept any interference received, including interference that may cause undesired operation. This equipment has been tested and found to comply with the limits for a Class B digital device, pursuant to Part 15 of the FCC Rules. These limits are designed to provide reasonable protection against harmful interference in a residential installation. This equipment generates, uses, and can radiate radio frequency energy and, if not installed and used in accordance with the instructions, may cause harmful interference to radio communications. However, there is no guarantee that interference will not occur in a particular installation. If this equipment does cause harmful interference to radio or television reception, which can be determined by turning the equipment off and on, the user is encouraged to try to correct the interference by one or more of the following measures:  
- Reorient or relocate the receiving antenna.  
- Increase the separation between the equipment and receiver.

- Connect the equipment into an outlet on a circuit different from that to which the receiver is connected. Consult the dealer or an experienced radio/TV technician for help.

## ISED RADIATION EXPOSURE STATEMENT

This equipment complies with ISED RF radiation exposure limits set forth for an uncontrolled environment. This transmitter must not be co-located or operating in conjunction with any other antenna or transmitter. This equipment should be installed and operated with a minimum distance of 20 cm between the radiator and your body. Only use the power supply provided.

ISED établies pour un environnement non contrôlé. Cet émetteur ne doit pas être co-implanté ou fonctionner en conjonction avec toute autre antenne ou transmetteur. Cet émetteur ne doit pas être co-implanté ou fonctionner en conjonction avec toute autre antenne ou transmetteur. Industrial cellular router doit être installé et utilisé avec une distance minimale de 20 cm entre le radiateur & votre corps.

## ISED RSS WARNING

This device complies with ISED licence-exempt RSS standard(s). Operation is subject to the following two conditions: (1) This device may not cause interference, and (2) this device must accept any interference, including interference that may cause undesired operation of the device.

Le présent appareil est conforme aux CNR d'ISED applicables aux appareils radio exempts de licence. L'exploitation est autorisée aux deux conditions suivantes: (1) l'appareil ne doit pas produire de brouillage, et (2) l'utilisateur de l'appareil doit accepter tout brouillage radioélectrique subi, même si le brouillage est susceptible d'en compromettre le fonctionnement.

## SPECIFICATIONS

**Wyze Garage Door Controller Bundle**  
**Model:** WCGDCB  
**Power Input:** 5V DC, 2A  
**Garage Door Controller**  
**Model:** WYZEGDC  
**Wyze Cam v3**  
**Model:** WYZEC3  
**Wi-Fi:** 802.11 b/g/n, 2.4GHz

## WARRANTY INFORMATION

Your Wyze product is covered by a one-year limited warranty. You can view the limited warranty terms at <https://wyze.com/return-warranty-policy> or request a copy by contacting Wyze at +1 (206) 339-9646.

## NEED HELP?

Contact our Support Team:  
<https://wyze.com/support>  
Join the Community:  
<https://wyze.com/community>



Scan the QR code to learn more

Apple logo and App Store are trademarks of Apple Inc., registered in the U.S. and other countries and regions. Google Assistant, Google Home, Google Play, and the Google Play logo are trademarks of Google LLC.

Wyze and Wyze Garage Door Controller are trademarks of Wyze Labs, Inc.