

100mm

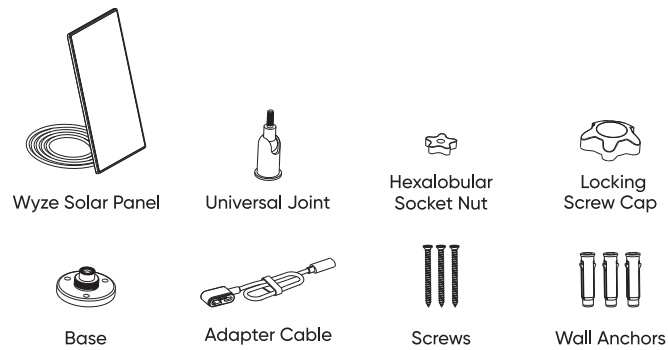
QUICK START GUIDE

Read this manual carefully and save it for future reference.

100mm

IN THE BOX

Wyze Solar Panel	x1	Adapter Cable	x1
Universal Joint	x1	Screws	x3
Hexalobular Socket Nut	x1	Wall Anchors	x3
Locking Screw Cap	x1	Quick Start Guide	x1
Base	x1		



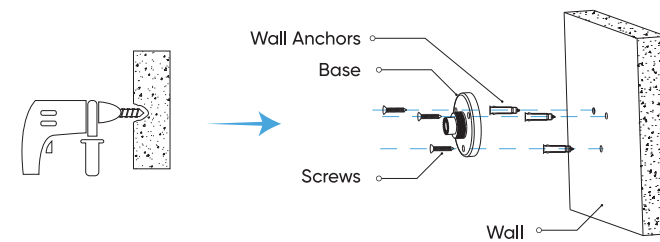
Disclaimer: The products, accessories, user interfaces, etc. illustrated in this guide are intended for reference only. Due to product updates, the actual product and the illustrations in this guide may vary.

INSTALLATION

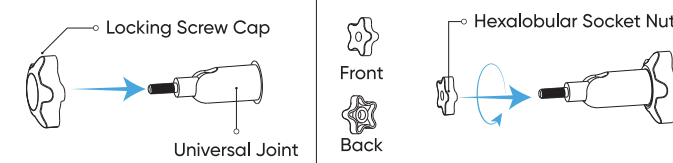
Place Wyze Solar Panel in an area with consistent sunlight throughout the year. It only needs a few hours of direct sunlight each day to keep your camera powered.

The amount of energy that the solar panel produces is affected by weather conditions, seasonal changes, geographic location, etc.

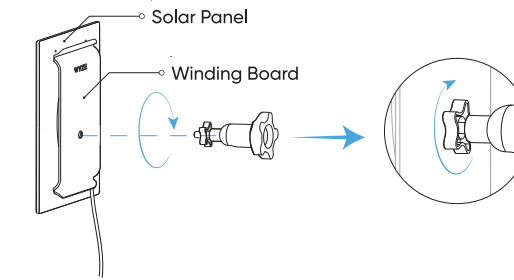
- Fix the base to your mounting location using the included screws. If the installation surface is soft or unstable, first use a $\Phi 6.0$ drill bit to drill a hole in the wall, then insert the anchor nail into the hole, and fix the base with screws.



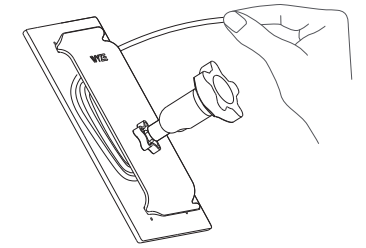
- First, install the locking screw cap into the universal joint and then screw the hexalobular socket nut into the universal joint.



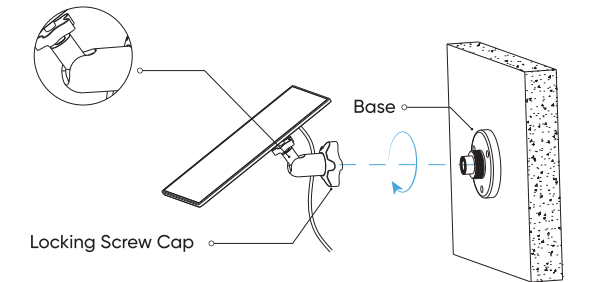
- Screw the universal joint into the back of the solar panel. Tighten it firmly with the attached nut.



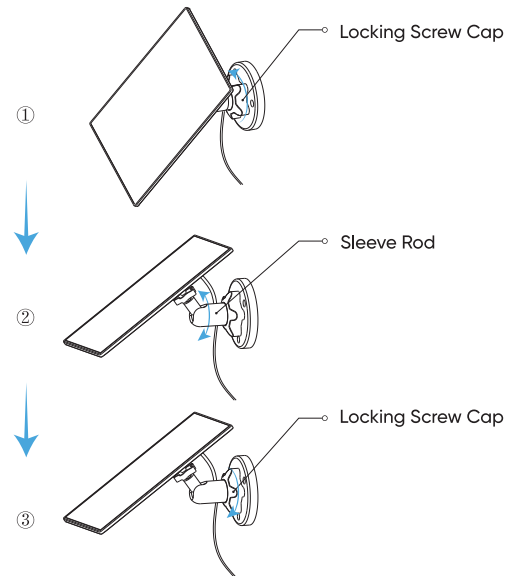
- Estimate the length of cable needed to attach to the camera. Then coil the excess cable around the winding board.



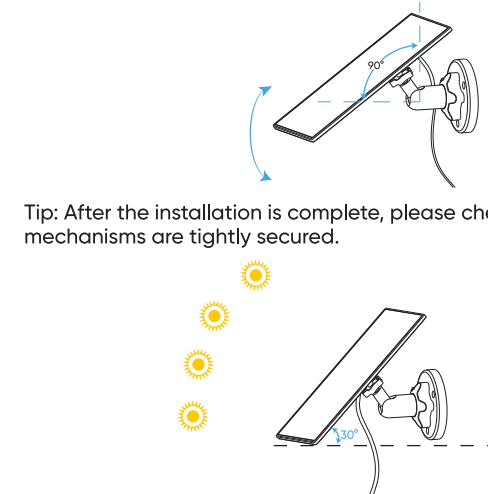
- Screw the locking screw cap into the base. Make sure that the universal joint is angled upward.



- When adjusting the solar panel left or right, loosen the locking screw cap, turn the sleeve rod, and tighten the locking screw cap when the panel is in position.



- Wyze Solar Panel's angle can be adjusted up and down up to 90° .

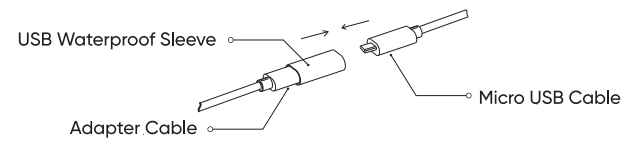


Tip: After the installation is complete, please check that all locking mechanisms are tightly secured.

HOW TO POSITION YOUR SOLAR PANEL

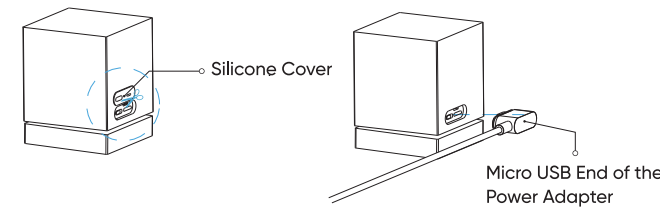
- Find the area that gets the most direct sunlight throughout the day.
- Angle the solar panel upward 30° .
- Point it south if in the northern hemisphere and north if in the southern hemisphere.

- Insert the micro USB cable into the sleeve of the power adapter and make sure it is connected securely.



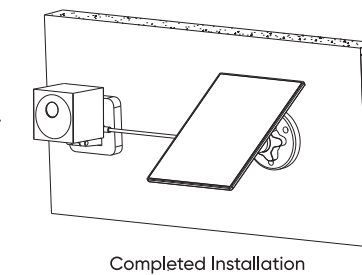
- Lift and remove the silicone cover from the port on the back of your Wyze Cam Outdoor. Then insert the micro USB end of the power adapter into the port. Make sure the connection is secure.

Tip: Save the silicone cover in order to use the camera without the solar panel in the future to protect the port.



IMPORTANT

- Wipe the face of the solar panel with a soft, damp cloth regularly to clear any dust or debris.
- Be sure to update the firmware version of the camera to the latest version.



BASIC PARAMETERS

Micro USB cable length: 4m
Solar power rating: 2.5W, 5V DC
Operating temperature: -5°F to 120°F (-20.5°C to 48.5°C)

FCC WARNING

Any changes or modifications not expressly approved by the party responsible for compliance could void the user's authority to operate the equipment. This device complies with part 15 of the FCC Rules. Operation is subject to the following two conditions: (1) This device may not cause harmful interference, and (2) this device must accept any interference received, including interference that may cause undesired operation.

WARRANTY

Your Wyze product is covered by a one-year limited warranty. You can view the limited warranty terms at <https://wyze.com/return-warranty-policy> or request a copy by contacting Wyze at +1 (206) 339-9646.

NEED HELP?

Contact our Support Team:
<https://wyze.com/support>
Join our Community:
<https://wyze.com/community>



Scan the QR code to learn more

User Manual Version: V1.0