

40mm

76mm

QUICK START GUIDE

WELCOME TO WYZE

Hi! Thanks for getting your hands on a Wyze Room Sensor, and if this is your first Wyze product, welcome to the Wyze family!

You just made a commitment to a better, more connected lifestyle. This guide will help you get things set up.

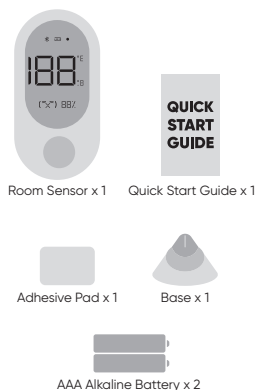
Please read this guide carefully before setting up the device, and keep it in a safe place for future reference.

WARRANTY

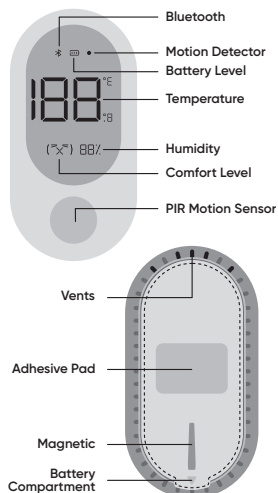
Your Wyze product is covered by a one-year limited warranty. You can view the limited warranty terms at <https://wyze.com/return-warranty-policy> or request a copy by contacting Wyze at +1 (206) 339-9646.

IN THE BOX

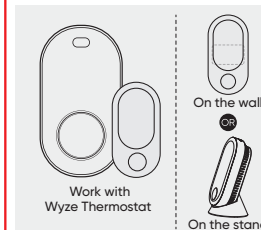
- Wyze Room Sensor x 1
- Base x 1
- Adhesive Pad x 1
- AAA Alkaline Battery x 2
- Quick Start Guide x 1



DISPLAY SCREEN GUIDE

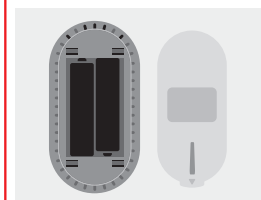


COMBINATIONS

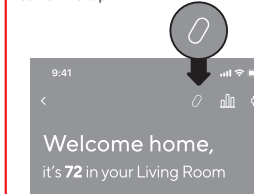


SETUP

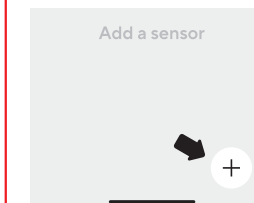
Insert the included batteries into the sensor's battery compartment.



Download the Wyze app, and sign in to your Wyze account. Tap on your Wyze Thermostat in the app, then tap the pill icon at the top.



Tap the "+" plus icon to add your sensor. Follow the in-app instructions to finish set up.



Mount the room sensor at least 5 feet above the ground. To prevent signal shielding, do not mount the sensor on or near metallic surfaces. Take care to not block the PIR Motion Sensor.



You're all set! Check out your new room sensor's features in the Wyze app. Important: Do not place in direct sunlight, near windows or vents.

COMFORT LEVEL

Temp	T < 66°F	66°F ≤ T ≤ 80°F	T > 80°F
Humidity			
H < 20%	(^ ^)	(^ ^)	(^ ^)
20% ≤ H ≤ 85%	(^ ^)	(^ ^)	(^ ^)
H > 85%	(^ ^)	(^ ^)	(^ ^)

Low Battery Alert

Replace the battery when the battery level is low. The battery level is displayed at the top of the sensor's display.



Reset/Connectivity Button

Single Press To set up the sensor.
Press and Hold To reset the sensor, press and hold the reset button for 5 seconds.



RESTRICTIONS

- Do not ingest battery. Chemical Burn Hazard. This product contains batteries. If a battery is swallowed, it can cause severe internal burns in just 2 hours and can lead to death. Keep new and used batteries away from children. If the battery compartment does not close securely, stop using the product and keep it away from children. If you think a battery might have been swallowed or placed inside any part of the body, seek immediate medical attention.
- Risk of explosion if the battery is replaced by an incorrect type.
- Do not place the sensor in direct sunlight.

- Wyze Room Sensor is not weatherproof.
- Wyze Room Sensor is not IP rated and is not intended for outdoor use.
- If the equipment is used in a manner not specified by the manufacturer, the protection provided by the equipment may be impaired.
- Do not operate in conditions above 90% humidity, as this can cause condensation/icing/fog and result in damage.

FCC WARNING

Any changes or modifications not expressly approved by the party responsible for compliance could void the user's authority to operate this equipment. This device complies with part 15 of the FCC Rules. Operation is subject to the following two conditions: (1) This device may not cause harmful interference, and (2) this device must accept any interference received, including interference that may cause undesired operation. This equipment has been tested and found to comply with the limits for a Class B digital device, pursuant to Part 15 of the FCC Rules. These limits are designed to provide reasonable protection against harmful interference in a residential installation. This equipment generates, uses, and can radiate radio frequency energy and, if not installed and used in accordance with the instructions, may cause harmful interference to radio communications. However, there is no guarantee that interference will not occur in a particular installation. If this equipment does cause

harmful interference to radio or television reception, which can be determined by turning the equipment off and on, the user is encouraged to try to correct the interference by one or more of the following measures:

- Reorient or relocate the receiving antenna.
- Increase the separation between the equipment and receiver.
- Connect the equipment into an outlet on a circuit different from that to which the receiver is connected.

Consult the dealer or an experienced radio/TV technician for help.

FCC RADIATION EXPOSURE STATEMENT

This equipment complies with FCC radiation exposure limits set forth for an uncontrolled environment. This transmitter must not be co-located or operating in conjunction with any other antenna or transmitter.

ISED RADIATION EXPOSURE STATEMENT

This equipment complies with ISED RF radiation exposure limits set forth for an uncontrolled environment. This transmitter must not be co-located or operating in conjunction with any other antenna or transmitter. This equipment should be installed and operated with minimum distance of 20 cm between the radiator and

your body. Any changes or modifications not expressly approved by the party responsible for compliance could void the user's authority to operate the equipment.

ISED RSS WARNING

This device complies with ISED licence-exempt RSS standard(s). Operation is subject to the following two conditions: (1) this device may not cause interference, and (2) this device must accept any interference, including interference that may cause undesired operation of the device.

SPECIFICATIONS

- Model: WRSENSOR
- Bluetooth: BLE 4.2
- Display: LCD
- Input: DC2.5-3V
- Dimensions: 80 mm x 40 mm x 12.4 mm
- Weight: 2.1 oz (60 g)
- Battery type: AAA Alkaline Battery x 2
- Battery life: 1 year
- Operating temperature: 20°F - 122°F (-6°C - 50°C)
- Operating humidity: 0% - 90%RH
- Storage temperature: 20°F - 122°F (-6°C - 50°C)
- Storage humidity: 0% - 90%RH
- PIR motion sensor range: 17 ft

NEED HELP?

Contact our Support Team:
<https://wyze.com/support>
Join our Community:
<https://wyze.com/community>

Apple logo and App Store are trademarks of Apple Inc., registered in the U.S. and other countries and regions. Google Assistant, Google Home, Google Play, and the Google Play logo are trademarks of Google LLC.

