

127mm (5in)

177.8mm (7in)

Wyze Cordless Vacuum S

# QUICK START GUIDE

Read this manual carefully and save it for future reference.

## IMPORTANT SAFEGUARDS

**WARNING:** Read all safety warnings and instructions before using. Failure to follow the warnings and instructions may result in electric shock, fire and/or serious injury.

**WARNING:** To reduce the risk of fire, electric shock, or injury:

- This appliance has been designed for domestic dry vacuum cleaning only. Do not pick up liquids or use on wet surfaces for fear of damage to the appliance.
- Never immerse the charger or unit in water to avoid danger.
- Keep the appliance and accessories away from hot surfaces like hot gas or microwave-ovens.
- Do not block the appliance opening or hinder air flow so as not to affect its heat dissipation effect.
- Do not pick up anything that is flammable, burning or smoking, like cigarette end, matchstick or ashes with waste heat.
- The charger has been designed for a special voltage. Always check that the more voltage is the same as that stated on the rating plate.
- Do not use the appliance if any signs of charger or power wire damage or aging.
- Only use batteries and chargers supplied by manufacturer. Never use any of them provided by other company. Use of any other battery packs may create a risk of injury and fire. A charger that is suitable for one type of battery pack may create a risk of fire when used with another battery pack.
- Ensure the appliance is power off before cleaning, or may cause accidental electric shock.
- Repairs should be carried out by a service agent in accordance with relevant safety regulations if battery can not be charged normally. The battery can not be removed for other purposes. This will ensure that the safety of the product is maintained.
- Care should be taken on dispose of the battery pack safely in accordance with local regulations; never dispose in the fire or water as this may increase the risk of explosion or contamination.
- The appliance only can be used by children or persons with reduced physical capabilities if they have been given supervision or instruction concerning use of the appliance in a safe way and understand the hazards involved.
- Misuse or use of any accessory or attachment other than manufacturer's recommended may present a risk of personal injury.
- Do not use the appliance for other purposes.
- Do not use the appliance outdoors or on wet surfaces. Do not expose to rain. Store indoors.
- Unplug from outlet when not in charge and before servicing.
- Do not use outdoors.
- Do not allow to be used as a toy. Close attention is necessary when used by or near children.
- Use only as described in this manual. Use only manufacturer's recommended attachments.

- Do not use with damaged charger. If appliance is not working as it should, has been dropped, damaged, left outdoors, or dropped into water, return it to a service center.
- Do not pull or carry by charger cord, use cord as a handle, close a door on cord, or pull cord around sharp edges or corners. Do not run appliance over cord. Keep cord away from heated surfaces.
- Do not unplug by pulling on cord. To unplug, grasp the charger, not the cord.
- Do not handle plug or appliance with wet hands.
- Do not put any object into openings. Do not use with any opening blocked; keep free of dust, lint, hair, and anything that may reduce air flow.
- Keep hair, loose clothing, fingers, and all parts of body away from openings and moving parts.
- Turn off all controls before unplugging.
- Use extra care when cleaning on stairs.
- Do not use to pick up flammable or combustible liquids, such as gasoline, or use in areas where they may be present.
- Always turn off this appliance before connecting or disconnecting.
- Do not use without dust cup or filters in place.
- Prevent unintentional starting. Ensure the switch is in the off-position before connecting to battery pack, picking up or carrying the appliance. Carrying the appliance with your finger on the switch or engaging appliance that have the switch on invites accidents.
- Disconnect the battery pack from the appliance before making any adjustments, changing accessories, or storing appliance. Such preventive safety measures reduce the risk of starting the appliance accidentally.
- Under abusive conditions, liquid may be ejected from the battery; avoid contact. If contact accidentally occurs, flush with water. If liquid contacts eyes, additionally seek medical help. Liquid ejected from the battery may cause irritation or burns.
- Do not use a battery pack or appliance that is damaged or modified. Damaged or modified batteries may exhibit unpredictable behavior resulting in fire, explosion or risk of injury.
- Do not expose a battery pack or appliance to fire or excessive temperature. Exposure to fire or temperature above 130°C may cause explosion.
- Follow all charging instructions and do not charge the battery pack or appliance outside of the temperature range specified in the instructions. Charging improperly or at temperature outside of the specified range may damage the battery and increase the risk of fire.
- Do not modify or attempt to repair the appliance or the battery pack except as indicated in the instructions for use and care.
  - Operating temperature: -32°F-104°F
  - Charging temperature: -32°F-113°F
  - Storage temperature: -4°F-131°F

## SAVE THESE INSTRUCTIONS

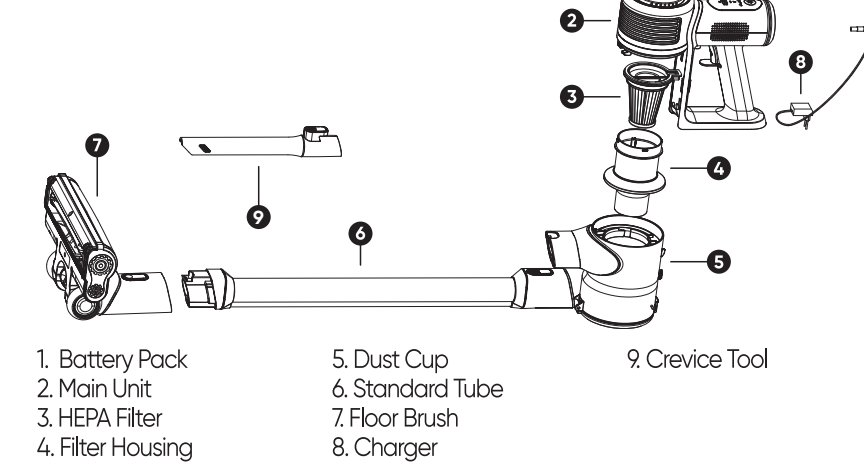
## FCC WARNING

Please note that changes or modifications of this product is not expressly approved by the party responsible for compliance could void the user's authority to operate the equipment.

**NOTE:** This equipment has been tested and found to comply with the limits for a Class B digital device, pursuant to Part 15 of the FCC Rules. These limits are designed to provide reasonable protection against harmful interference in a residential installation. This equipment generates, uses and can radiate radio frequency energy and, if not installed and used in accordance with the instructions, may cause harmful interference to radio communications. However, there is no guarantee that interference will not occur in a particular installation. If this equipment does cause harmful interference to radio or television reception, which can be determined by turning the equipment off and on, the user is encouraged to try to correct the interference by one or more of the following measures: -- Reorient or relocate the receiving antenna. -- Increase the separation between the equipment and receiver. -- Connect the equipment into an outlet on a circuit different from that to which the receiver is connected. -- Consult the dealer or an experienced radio/TV technician for help.

This device complies with Part 15 of the FCC Rules. Operation is subject to the following two conditions: (1) this device may not cause harmful interference, and (2) this device must accept any interference received, including interference that may cause undesired operation.

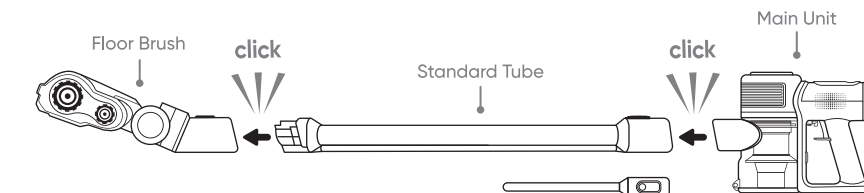
## PRODUCT DISPLAY



## PRODUCT ASSEMBLY

For convenient transportation and storage, the main unit, floor brush, standard tube, charger and crevice tool have been packaged individually due to the appliance's size. Follow the steps below to assemble the vacuum before first use.

Attach the Floor Brush to the Standard Tube, then connect the Standard Tube to the Main Unit. Make sure that all 3 parts click into place securely.



## NEED HELP?

Contact our Support Team:  
<https://wyze.com/support>  
 Join the Community:  
<https://wyze.com/community>



Scan the QR code to learn more

## OPERATING INSTRUCTIONS

The LED Screen will turn on when the vacuum is in operation.

**Power indicator:** Displays a solid light while in operation, a flashing light while charging, and no light when off.

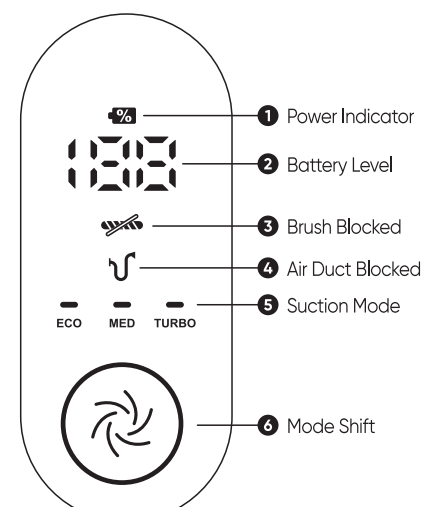
**Battery level:** Current battery charge level. Fully charged: 100%. Discharged: 0%. Vacuum will power off until recharged.

**Brush blocked:** Flashes when floor brush is blocked.

**Air duct blocked:** Flashes when airflow is blocked.

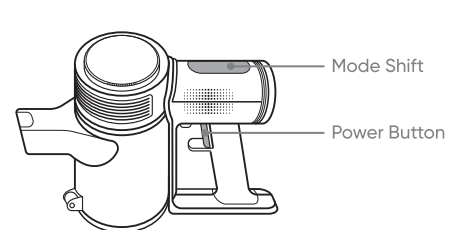
**Suction mode:** Eco, Med, and Turbo Mode.

**Mode shift:** Tap to switch between modes while vacuum is in operation.



## VACUUM OPERATION

Press the power button to turn on the vacuum. The vacuum's suction level is in Med Mode by default. While powered on, move the vacuum across the area to be cleaned. Tap the Mode shift to switch to Turbo or Eco Mode. Press the power button again to stop cleaning.



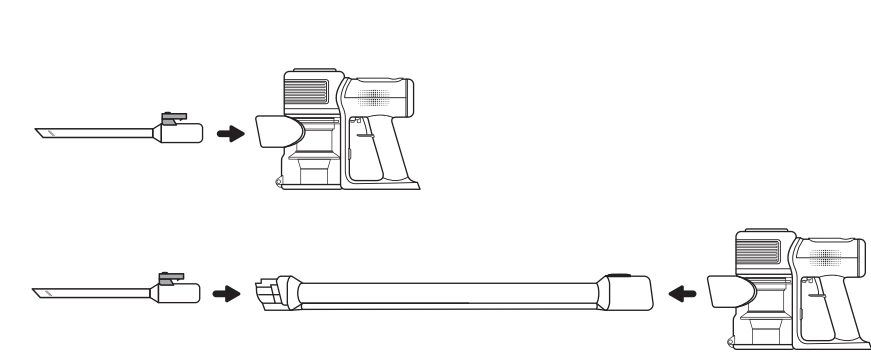
## VACUUM DISASSEMBLY

Press the Release Keys (1, 2) to detach the Floor Brush and Standard Tube from the Main Unit. Before cleaning the Dust Cup, remove any attachments (ex. Standard Tube) from the Main Unit by pressing the release key.



## CREVICE TOOL OPERATION

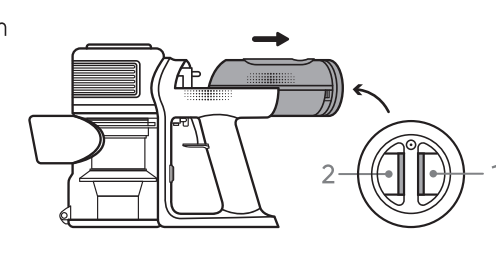
Use the Crevice Tool to clean in tight corners. It can be attached to the Main Unit or Standard Tube.



## BATTERY REMOVAL

Hold the main unit of the vacuum with one hand. With your other hand, pinch the release buttons (1, 2) and pull to remove the battery.

**IMPORTANT:** See the note at the end of this guide for proper battery recycling.



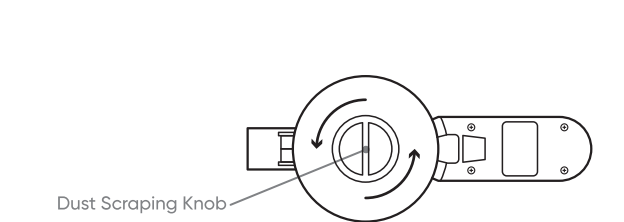
## CHARGING THE BATTERY

When charging, the LED screen will display the current battery level percentage. When fully charged, it will display 100%. It takes 4-6 hours to charge the vacuum from 0-100%.

**IMPORTANT:** The vacuum will not turn on while charging.

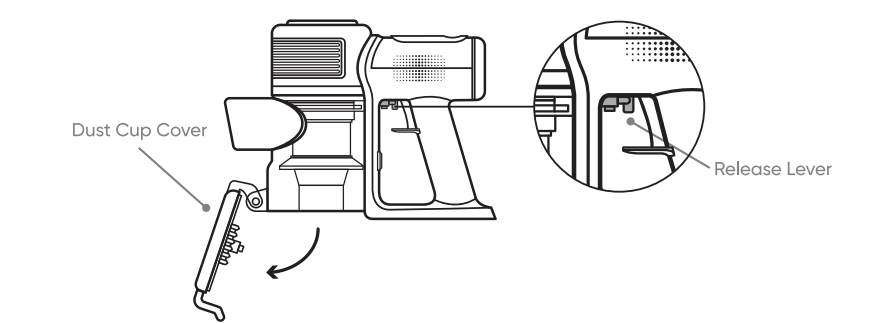
## CLEANING & MAINTENANCE

Turn the Filter Brush Knob to clean the dust from the HEPA filter and restore the suction power.



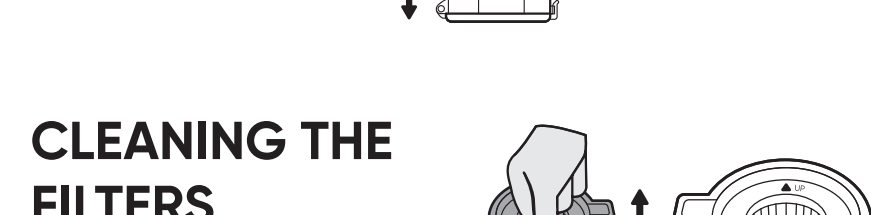
## EMPTYING THE DUST CUP

The one-touch Release Lever makes emptying the vacuum quick and easy. Hold the vacuum's main unit above a trash bin. Pull the Release Lever so that the Dust Cup Cover pivots and releases the debris.



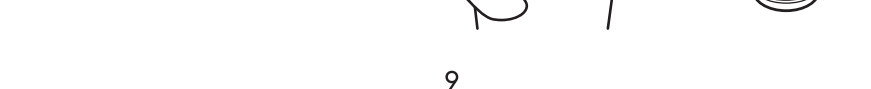
## REMOVING THE DUST CUP

Slide the Release Key to the left and pull to remove the Dust Cup from the Main Unit.

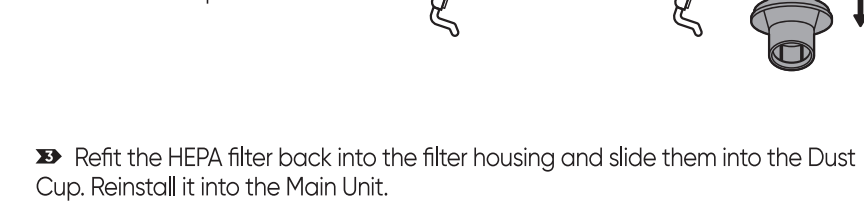


## CLEANING THE FILTERS

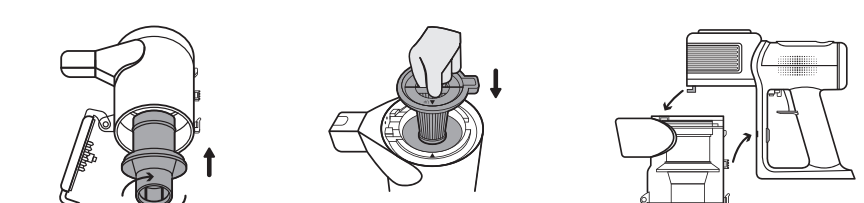
Firmly hold the filter bin handle and pull the HEPA filter out of the filter housing.



Grasp the filter housing and rotate it counter-clockwise to pull it out of the Dust Cup. Tap out any debris from the filter housing. If needed, rinse with fresh water and wipe it dry before reinstalling into the Dust Cup.



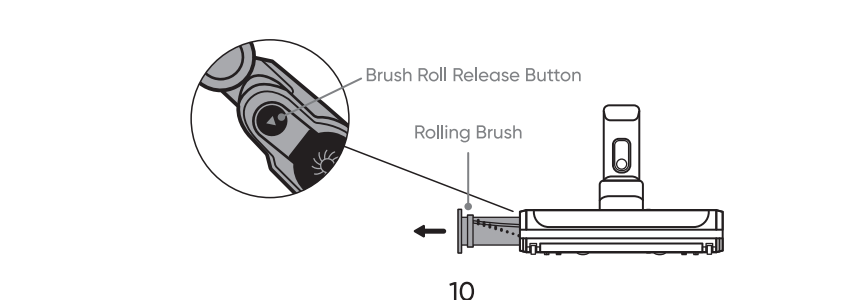
Refit the HEPA filter back into the filter housing and slide them into the Dust Cup. Reinstall it into the Main Unit.



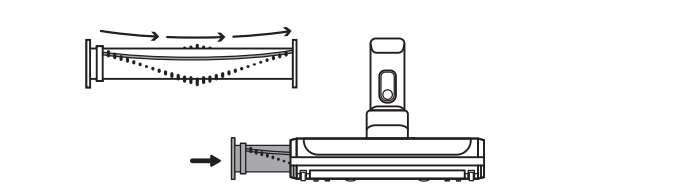
## CLEARING THE FLOOR BRUSH

Before cleaning, remove any attachments (ex. Standard Tube) from the Floor Brush by pressing the Release Key.

Push the Brush Roll Release Button and pull the Rolling Brush out.



Run a razor blade down the groove of the brush bar to break up hair and debris, and pull remove it.



## BASIC MAINTENANCE

Empty the Dust Cup after each use. Wash the filters with fresh water when there's excess dirt or clogs. Keep the Floor Brush free of hair and debris to keep it working efficiently.

## SPECIFICATIONS

Product Model: WCLVAC  
 Working Voltage: 21.6 V ==  
 Rated Power: 300 W  
 Main Unit Weight: 2.8 lbs  
 Battery Charger Model: WCVCGERW  
 Battery Charger Input: 100-240V-50/60Hz  
 Battery Charger Output: 27V == 500mA  
 Electrical Brush Rated Power: 15 W  
 Charging Period: 4-6 hours

**Help protect the environment!**  
**DO NOT discard the battery into your garbage can.**

**IMPORTANT:** Wyze Cordless Vacuum S uses a lithium-ion rechargeable and recyclable battery. When the battery no longer functions, it should be removed and recycled at an authorized recycling center. Contact your local recycling center for more information and where to drop off the used battery, or visit <https://www.call2recycle.org/locator/> to find a drop off location near you.

# 用户手册

成品尺寸:127\*177.8mm

材质:157g铜版纸

印刷:单黑

工艺:双面覆哑膜,六折页

S1 (WYZE-V1.0)