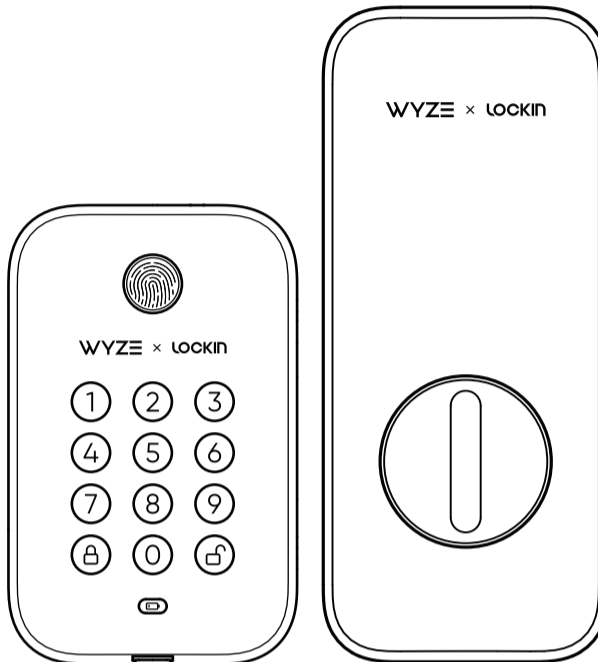


# FRONT

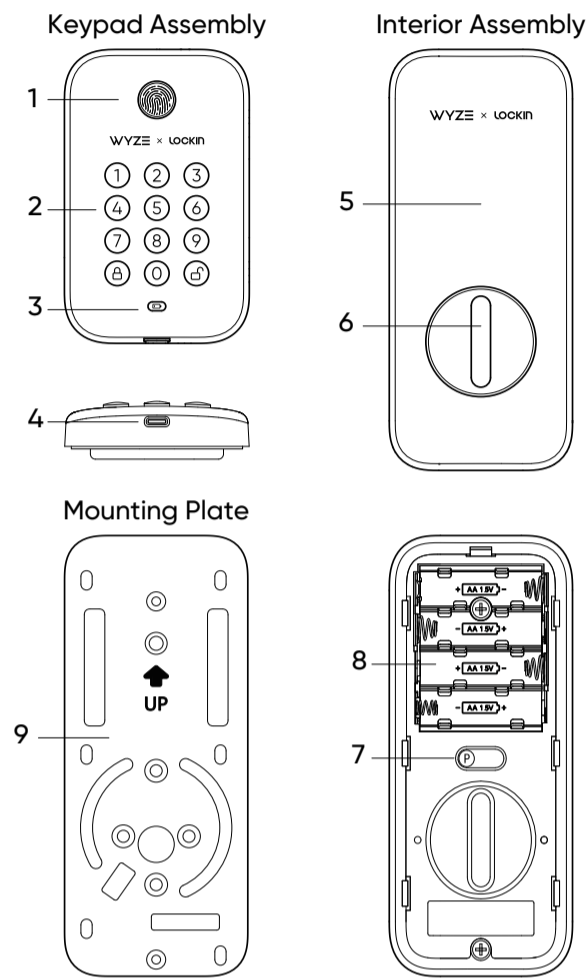
## QUICK START GUIDE

WYZE x LOCKIN

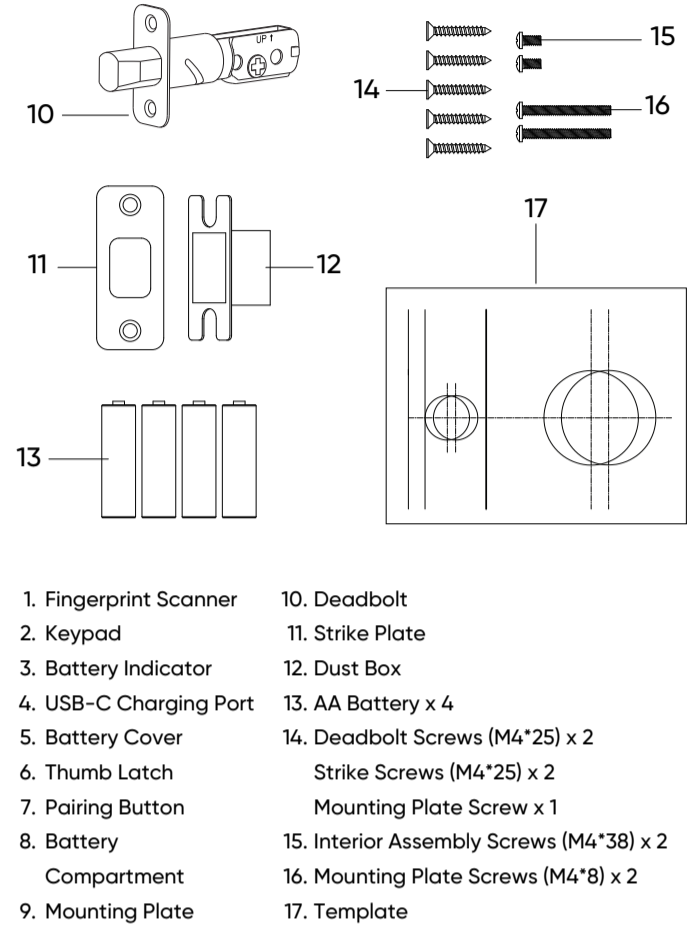


1

### IN THE BOX



2



3

### WELCOME TO WYZE

Hi! Thanks for getting your hands on a Wyze Lock Bolt. If this is your first Wyze product, welcome to the Wyze family!

This guide will help you get things set up. In the app, you can also follow these steps and watch the video tutorial.

For an easier installation, we recommend having a helping hand nearby.

### SETUP

- 1. Download the Wyze app and sign in or create an account.



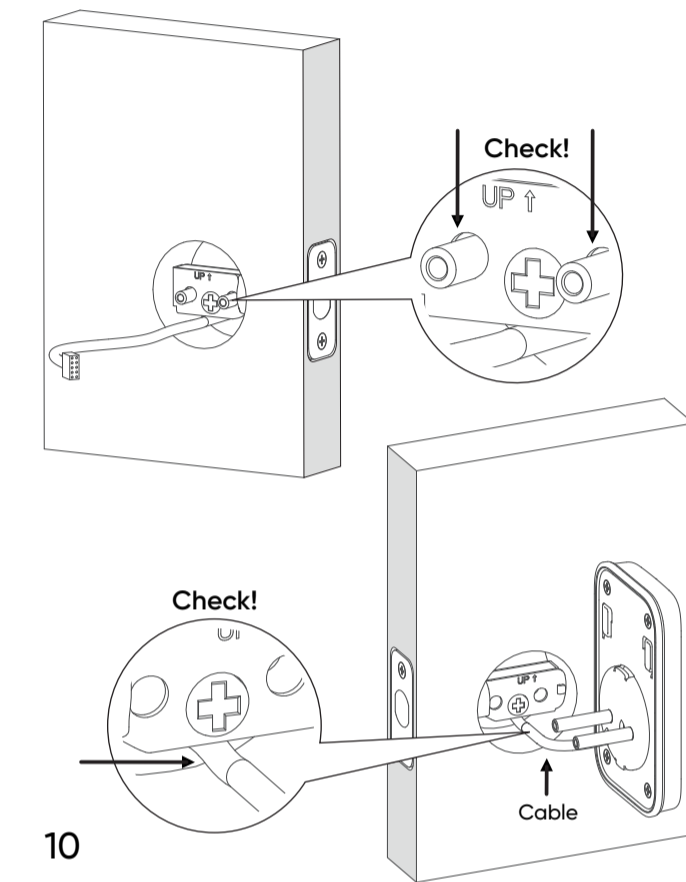
Apple logo and App Store are trademarks of Apple Inc., registered in the U.S. and other countries and regions. Google Assistant, Google Home, Google Play, and the Google Play logo are trademarks of Google LLC.

- 2. In the Wyze app, tap the + plus sign, then Add Device > Home > Wyze Lock Bolt. Follow the in-app installation and setup instructions to complete Wyze Lock Bolt setup.

4

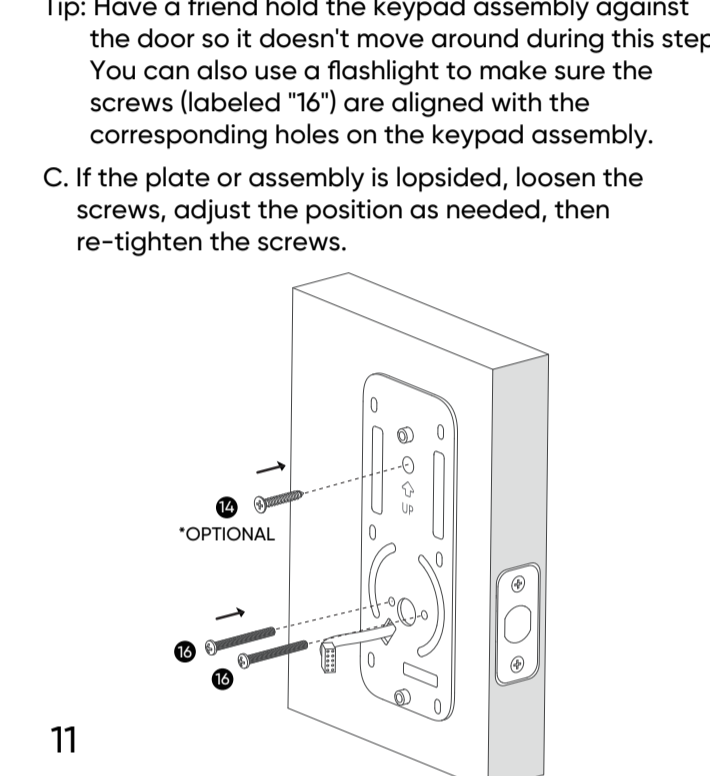
# BACK

- 10. Install the Keypad Assembly  
Install the keypad assembly by inserting the two prongs through the corresponding holes on the latch. Pass the cable on the keypad assembly (labeled below) under the deadbolt latch and through the door.



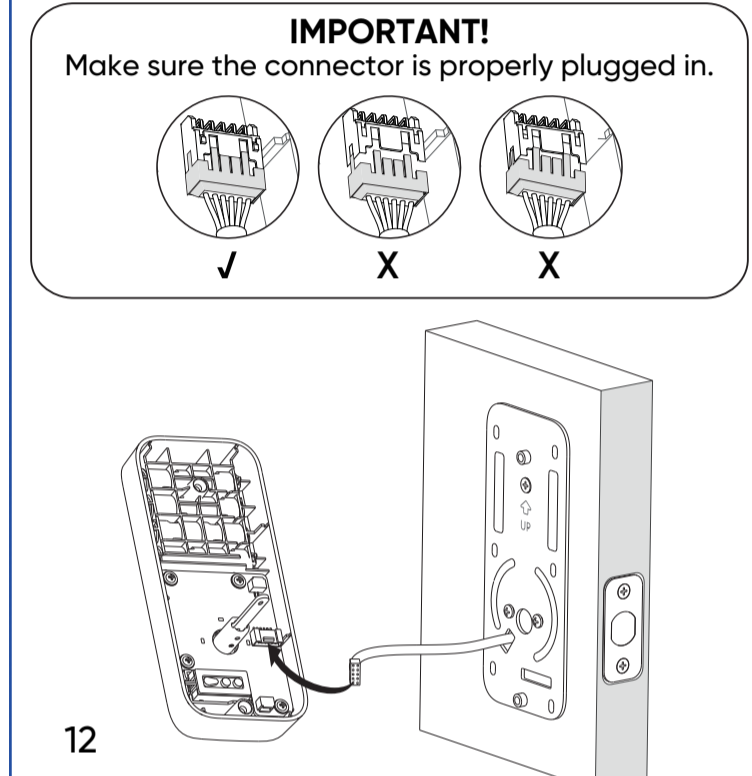
10

- 11. Install the Mounting Plate  
A. Separate the mounting plate from the interior assembly. Route the cable through the mounting plate hole as shown. Then install the mounting plate on the indoor-facing side of the door.  
B. Using the screws provided (labeled "14" & "16"), tighten the mounting plate and ensure the mounting plate and keypad assembly are aligned properly.  
Tip: Have a friend hold the keypad assembly against the door so it doesn't move around during this step. You can also use a flashlight to make sure the screws (labeled "16") are aligned with the corresponding holes on the keypad assembly.



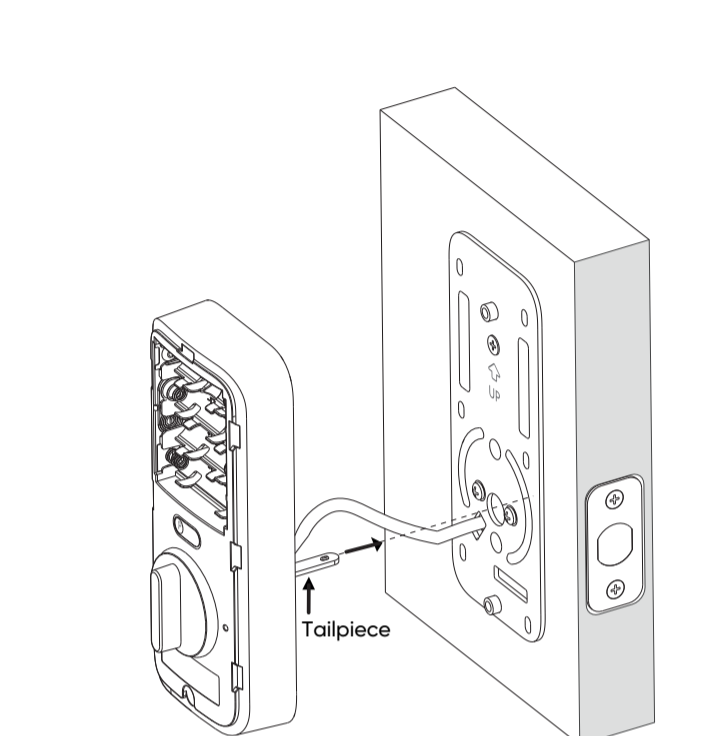
11

- 12. Install the Interior Assembly  
A. Remove the battery cover from the interior assembly. You should see a sticker at the bottom of the battery cover. Place your thumb there to pop it out. You may remove the sticker when done.  
B. Connect the cable wire into the back of the interior assembly. The side with a mark on it faces up. You can also check if the red/orange wires are on the right.



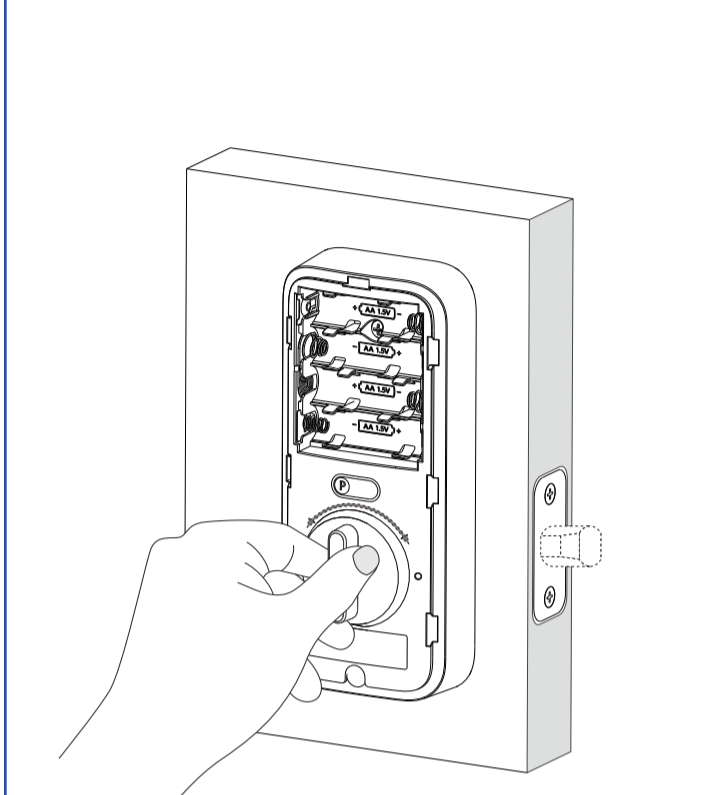
12

- 13. Wrap the excess part of the cable over the tailpiece. Ensure the cable is fully inside, then insert the interior assembly by aligning the tailpiece through the center hole as shown.



13

- 14. Rotate the thumb latch to make sure the latch retracts normally.

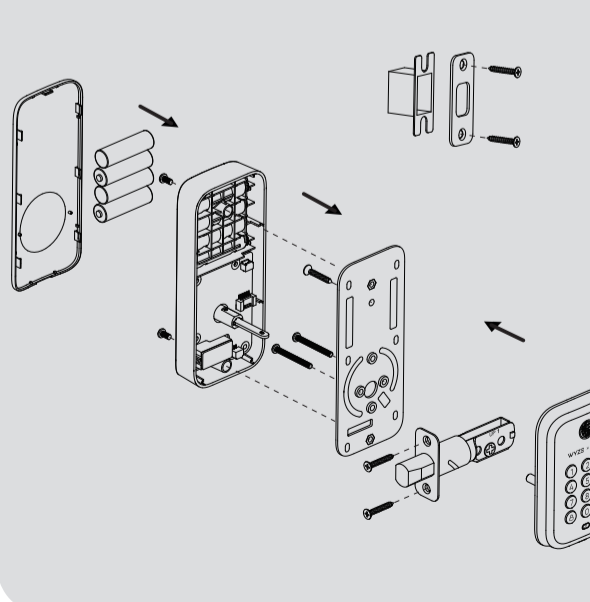


14

### OVERVIEW

Here's a look at the installation steps you'll go through in this guide:

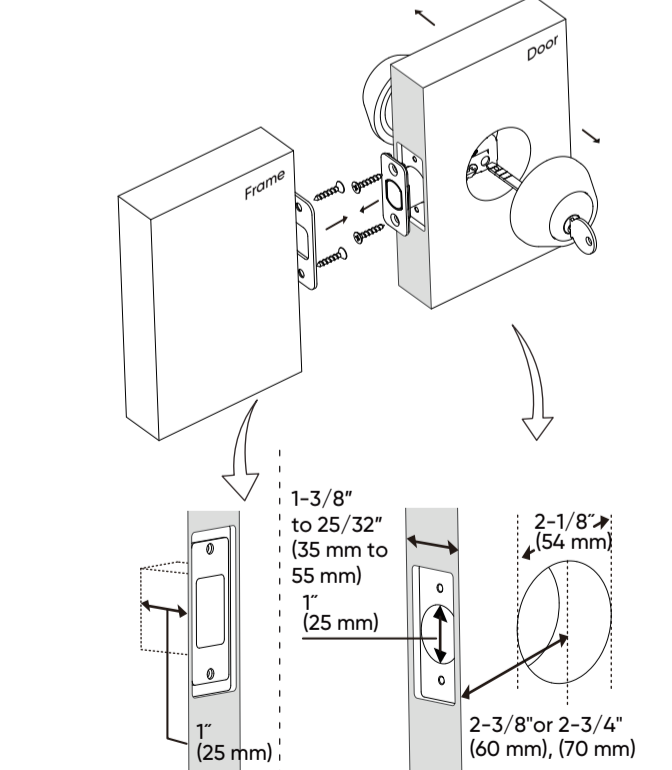
- Step 1: Remove the existing lock
- Step 2: Install the Dust Box and Strike Plate
- Step 3: Install the Deadbolt and Strike Plate
- Step 4: Install the Keypad Assembly
- Step 5: Install the Mounting Plate
- Step 6: Install the Interior Assembly



5

### INSTALLATION GUIDE

- 6. Prepare the door for installation.  
Remove the existing lock and check your door. If your door has holes like the one below, please skip step 2 (page 7). You can also use a measuring tape to check the lengths.



6

- 7. If needed, drill the following holes on your door (Standard US Doors are usually already compatible).

#### Step A: Determine Backset

- The backset is the distance from the door edge to the center of the hole on the door face.
- The adjustable latch fits both backsets of 2-3/8" (60 mm) and 2-3/4" (70 mm).

#### Step B: Use Template to Mark the Door

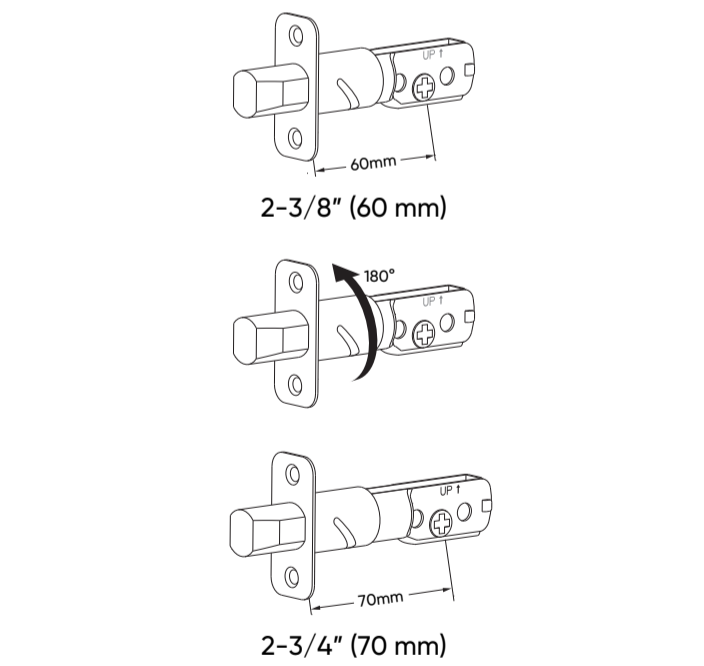
- Select the desired height and backset on the door face. Use the template to mark the center of the circle on the door face and the center of the door edge.

#### Step C: Drill Holes

- Use your marks as a guide to drill a 2-1/8" (54 mm) hole through the door face. For the latch, drill a 1" (25.4 mm) hole through door face's edge.

7

- 8. Determine if the latch needs to be adjusted

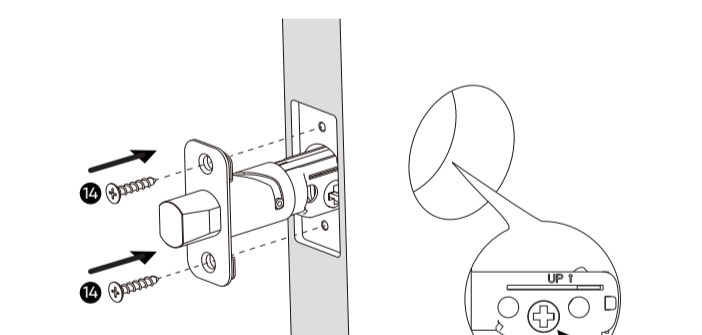


- Determine if the latch needs to be adjusted to the 2-3/4" (70 mm) backset.
- Measure the backset using the instructions on the previous page. If it is 2-3/4" (70 mm), you will need to adjust/extend the latch.
- To adjust, twist the latch until it stops.
- Reverse the direction to return to the 2-3/8" (60 mm) backset.

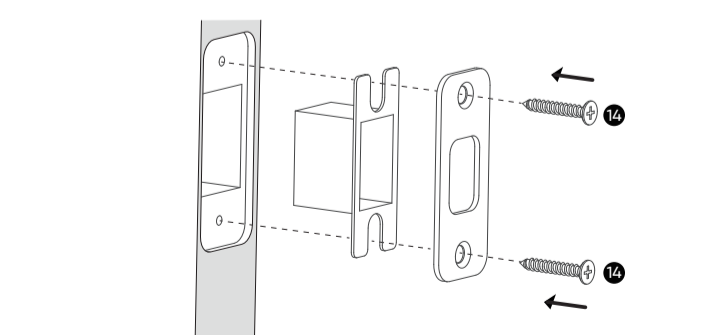
8

- 9. Install the Deadbolt and Dust Box

- A. Install the deadbolt using the screws provided (labeled "14"). Ensure the hub of the latch is centered with the hole on the door face.

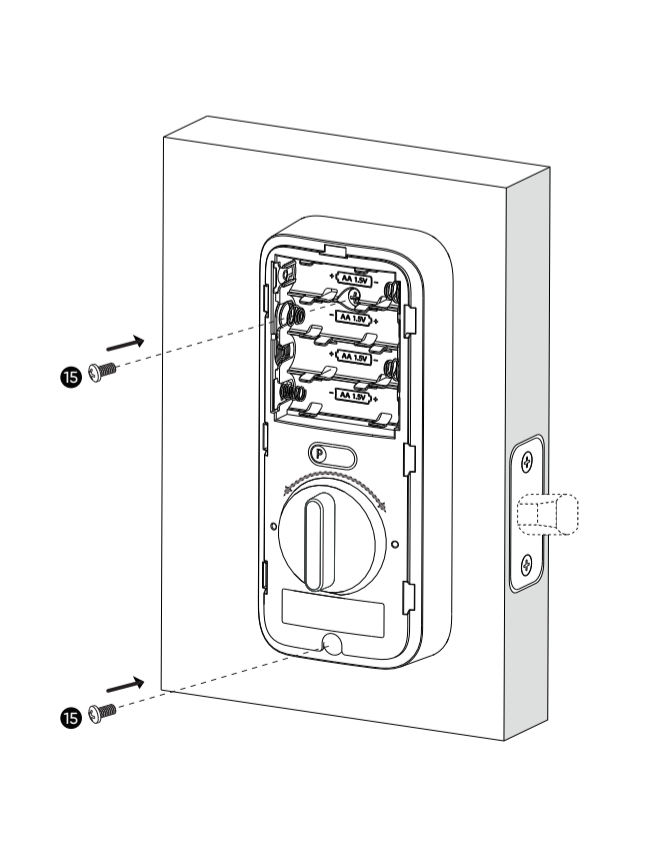


- B. Optional: Install the dust box and strike plate using the screws provided (labeled "14").



9

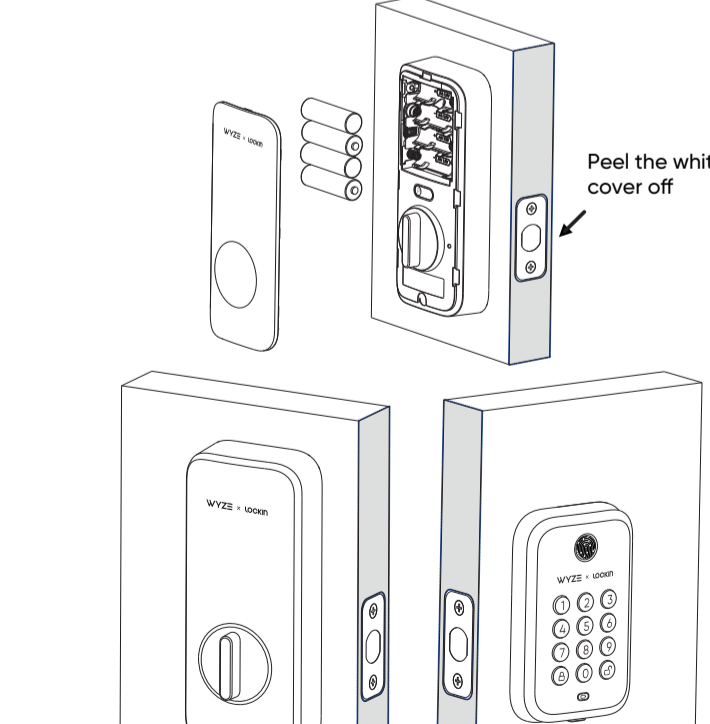
- 15. Using the screws provided (labeled "15"), install the interior assembly to the mounting plate.



15

### CHECK THE INSTALLATION

- 1. Insert the batteries provided. Don't put on the cover yet. We'll do that once setup is done in the app!
- 2. Check if the interior assembly is secure and aligned properly.
- 3. Check if the keypad assembly is secure and aligned properly.



16

### STATUS LIGHT GUIDE

- Flashing white light  
The lock is ready to connect
- Flashing red and white lights  
The lock is updating its firmware
- Solid red light  
The lock failed to lock or unlock
- Solid white light  
The lock successfully locked or unlocked
- Solid red low-battery light (labeled "3" in In The Box)  
The lock has low battery

### TROUBLESHOOTING

- 1. How do I reset the device?  
To reset Wyze Lock Bolt, remove one of the batteries, then place it back in.
- 2. Why didn't it beep after I pressed and held the Pairing button?  
Check if the cable is connected properly to the interior assembly. Make sure that the batteries have a charge and are installed correctly. If that doesn't work, contact support for a replacement.
- 3. Why didn't the keypad scan my fingerprint?  
Ensure the surface of the fingerprint scanner and your fingertip are free of debris, water, excessive oil, or other substances. Coarse or dry skin can also reduce readability.

17

### CAUTION

- Do not attempt to remove, repair, modify, or perform maintenance on any part of Wyze Lock Bolt except to change the batteries.
  - Use only new batteries and do not mix different types of batteries.
  - Do not install or operate Wyze Lock Bolt where the temperature is hotter than 122°F (50°C) or store Wyze Lock Bolt where the temperature is hotter than 158°F (70°C).
  - Do not install or operate Wyze Lock Bolt at altitudes higher than 5000 m.
- This device complies with Part 15 of the FCC Rules. Operation is subject to the following two conditions: (1) This device may not cause harmful interference, and (2) This device must accept any interference received, including interference that may cause undesired operation.

### FCC RADIATION EXPOSURE STATEMENT:

In order to comply with FCC radiation exposure limits this equipment must be installed and operated to provide at least 20 cm separation from the body at all times. This transmitter must not be co-located or operated in conjunction with any other antenna or transmitter.

### FCC WARNING:

Any changes or modifications not expressly approved by the party responsible for compliance could void the user's authority to operate the equipment. This equipment has been tested and found to comply with

18

the limits for a Class B digital device, pursuant to Part 15 of the FCC Rules. These limits are designed to provide reasonable protection against harmful interference in a residential installation. This equipment generates, uses, and can radiate radio frequency energy and, if not installed and used in accordance with the instructions, may cause harmful interference to radio communications. However, there is no guarantee that interference will not occur in a particular installation.

### SPECIFICATIONS

Name: Wyze Lock Bolt  
Model: WLCKB1  
Operating Voltage: 6V  
Weather Resistance: IP54 (or 64 TBD)  
Bluetooth: BLE 5.0  
FCC ID: 2AUJULWCKB1  
IC ID: 25466-WLCKB1

### WARRANTY

Your Wyze product is covered by a one-year limited warranty. You can view the limited warranty terms at <https://wyze.com/return-warranty-policy> or request a copy by contacting Wyze at +1 (206) 339-9664.

### NEED HELP?

Contact our Support Team:  
<https://wyze.com/support>

Join the Community:  
<https://wyze.com/community>

19 Wyze Labs, Inc. | [www.wyze.com](http://www.wyze.com)  
Built in partnership with Lockin



Scan the QR code to learn more