

QUICK START GUIDE

Read this manual carefully and save it for future reference.

GET BETTER SECURITY WITH Cam Plus

Record Full-Length Videos
Get unlimited full-length video recordings.

Smart A.I. Detection
Detect people, packages, vehicles, and more.

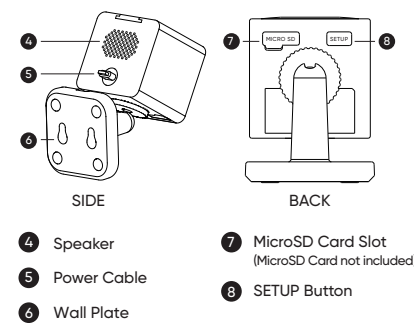
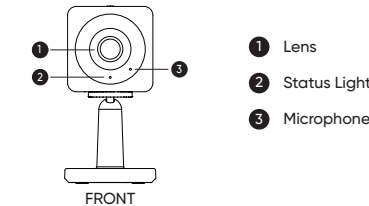
Back-to-Back Event Recording
Capture everything without 5-minute gaps.

Exclusive Discounts
Get exclusive discounts on Wyze products.

Subscribe or learn more at services.wyze.com.

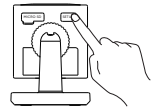
IN THE BOX

| | | | |
|--------------|-----|----------------------|-----|
| Wyze Cam OG | | Indoor Power Adapter | × 1 |
| Telephoto 3x | × 1 | Wall Anchors | × 2 |
| USB Cable | × 1 | Mounting Screw | × 2 |
| Wall Plate | × 1 | Quick Start Guide | × 1 |



SETUP

- Download the Wyze app and sign in or create an account.
 - Connect the camera to a power outlet and wait for 20 seconds or until the status light flashes red.
 - Press and release the SETUP button, then wait 3-5 seconds until there is a voice prompt.
 - Open the Wyze app and tap the + sign in the top left corner of the Home tab. Tap **Add Device > Cameras > Wyze Cam OG** and then follow the instructions.
- Only use the power supply provided.*



LIGHT INDICATORS DURING INSTALLATION

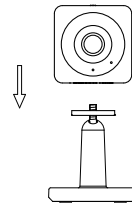
- Solid red light**
The device is powered on and initializing
- Flashing red light**
The device is ready to connect
- Flashing red & blue lights**
Connection is in progress
- Flashing blue light**
The device is connected and finishing setup
- Solid blue light**
The device is working properly

LIGHT INDICATORS AFTER SETUP

- Solid red light**
Live stream is being viewed or a recording is in progress
- Quickly flashing red light**
Siren is in use
- Solid blue light**
The device is working properly and no operations are running

INSTALLATION

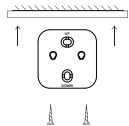
Screw the base stand into the bottom of the camera. Rotate the locking pad clockwise to lock in the camera. Then plug the power into the camera.



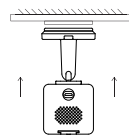
*Do not point the camera more than 15° upwards in an area that's unprotected from water or moisture. Water could accumulate on the lens and block the camera view.

CEILING MOUNT

- Use the included screws (~5 mm diameter, ~30 mm length) to screw the wall plate into the ceiling.

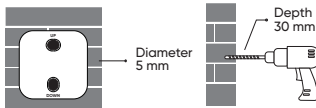


- Insert the camera base stand into the wall plate and push until you feel it is tightened into place. To remove, pull the base away from the wall plate.

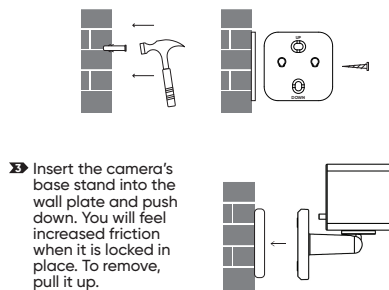


WALL MOUNT

- Use the included wall plate to locate the position of the holes and use a 13/64 drill bit to drill holes on the wall. The diameter of each drilled hole should be ~5 mm, and the depth of the hole ~30 mm. Please ensure that the wall can withstand more than three times the total weight of the camera, and be sure to fix it firmly to avoid accidental injury.



- Insert the wall anchor into the hole. Use the included screws to screw the wall plate into the wall anchor. Make sure the UP sign is pointing up.



FCC WARNING:

Any changes or modifications not expressly approved by the party responsible for compliance could void the user's authority to operate this equipment. This device complies with part 15 of the FCC Rules. Operation is subject to the following two conditions: (1) This device may not cause harmful interference, and (2) This device must accept any interference received, including interference that may cause undesired operation. This equipment has been tested and found to comply with the limits for a Class B digital device, pursuant to Part 15 of the FCC Rules. These limits are designed to provide reasonable protection against harmful interference in a residential installation. This equipment generates, uses, and can radiate radio frequency energy and, if not installed and used in accordance with the instructions, may cause harmful interference to radio or television reception. However, there is no guarantee that interference will not occur in a particular installation. If this equipment does cause harmful interference to radio or television reception, which can be determined by turning the equipment off and on, the user is encouraged to try to correct the interference by one or more of the following measures:

- Reorient or relocate the receiving antenna.
- Increase the separation between the equipment and receiver.
- Connect the equipment into an outlet on a circuit different from that to which the receiver is connected.
- Consult the dealer or an experienced radio/TV technician for help.

FCC RADIATION EXPOSURE STATEMENT:

This equipment complies with FCC radiation exposure limits set forth for an uncontrolled environment. This equipment should be installed and operated with minimum distance 20 cm between the radiator & your body. This transmitter must not be co-located or operating in conjunction with any other antenna or transmitter.

ISED RSS WARNING:

This device complies with ISED licence-exempt RSS standard(s). Operation is subject to the following two conditions: (1) this device may not cause interference, and (2) this device must accept any interference, including interference that may cause undesired operation of the device.

Le présent appareil est conforme aux CNR d'ISED applicables aux appareils radio exempts de licence. L'exploitation est autorisée aux deux conditions suivantes: (1) l'appareil ne doit pas produire de interférence, et (2) l'appareil doit accepter toute interférence radioélectrique subie, même si l'interférence est susceptible d'en compromettre le fonctionnement.

Supplier's Declaration of Conformity
Unique Identifier
Trade Name: WYZE Model No.: WYZECGT
Responsible Party – U.S. Contact Information
US Company Name: Wyze Lab, Inc.
Address: 5808 Lake Washington Blvd NE Suite 301, Kirkland, WA 98033 USA
Telephone number or internet contact information: 1-844-999-3226

ISED RADIATION EXPOSURE STATEMENT:

This equipment complies with ISED RF radiation exposure limits set forth for an uncontrolled environment. This transmitter must not be co-located or operating in conjunction with any other antenna or transmitter. This equipment should be installed and operated with a minimum distance of 20 cm between the radiator and your body. Only use the power supply provided. Any changes or modifications not expressly approved by the party responsible for compliance could void the user's authority to operate the equipment.

Cet appareil est conforme aux limites d'exposition de rayonnement RF ISED établies pour un environnement non contrôlé. Cet émetteur ne doit pas être co-implanté ou fonctionner en conjonction avec toute autre antenne ou transmetteur. Cet équipement doit être installé et utilisé avec une distance minimale de 20 cm entre le radiateur & votre corps. Tous changements ou modifications non expressément approuvés par la partie responsable de la conformité peut annuler l'autorité de l'utilisateur à opérer l'équipement.

WARRANTY

Your Wyze product is covered by a one-year limited warranty. You can view the limited warranty terms at <https://wyze.com/return-warranty-policy> or request a copy by contacting Wyze at +1 (206) 339-9646.

NEED HELP?

Contact our Support Team:
<https://wyze.com/support>
Join the Community:
<https://wyze.com/community>



Scan the QR code to learn more

Wyze and Wyze Cam OG Telephoto 3x are trademarks of Wyze Labs, Inc.

Disclaimer: The products, accessories, user interfaces, etc. illustrated in this guide are intended for reference only. Due to product updates, the actual product and the illustrations in this guide may vary.