

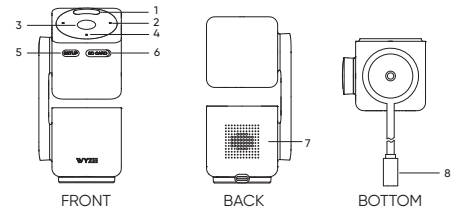
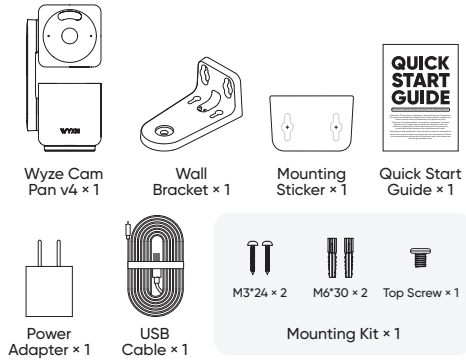
# QUICK START GUIDE

Read this manual carefully and save it for future reference.

Disclaimer: The products, accessories, user interfaces, etc. illustrated in this guide are intended for reference only. Due to product updates, the actual product and the illustrations in this guide may vary.

**GET BETTER SECURITY WITH  Cam Plus**  
**Record Full-Length Videos**  
 Get unlimited full-length video recordings.  
**Smart AI Detection**  
 Detect people, packages, vehicles, and more.  
**Back-to-Back Event Recording**  
 Capture everything without 5-minute gaps.  
**Exclusive Discounts**  
 Get exclusive discounts on Wyze products.  
**Subscribe or learn more at [my.wyze.com](https://my.wyze.com).**

## IN THE BOX



- 1 Spotlight
- 2 Microphone
- 3 Lens
- 4 Status Light
- 5 SETUP Button
- 6 MicroSD Card Slot (Card not included)
- 7 Speaker
- 8 Power Input

## SETUP

- Download the Wyze app and sign in or create an account.






Apple logo and App Store are trademarks of Apple Inc., registered in the U.S. and other countries and regions. Google Assistant, Google Home, Google Play, and the Google Play logo are trademarks of Google LLC.

- Connect the camera to a power outlet and wait for 15 seconds until the status light flashes red.
- Once powered, the camera automatically enters pairing mode and plays a voice prompt. To re-pair later, press the SETUP button.
- In the Wyze app, tap the + plus sign. On the Add menu, tap Device > Cameras > Wyze Cam Pan v4. Follow the in-app instructions to finish setup.

## LIGHT INDICATORS DURING INSTALLATION

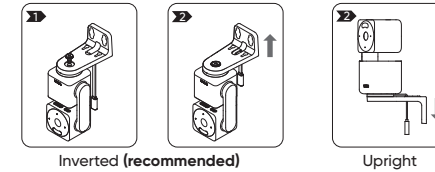
-  **Solid red light**  
The device is powered on and initializing
-  **Flashing red light**  
The device is ready to connect
-  **Flashing red and blue lights**  
Connection is in progress
-  **Flashing blue light**  
The device is connected and finishing setup
-  **Solid blue light**  
The device is working properly

## LIGHT INDICATORS AFTER SETUP

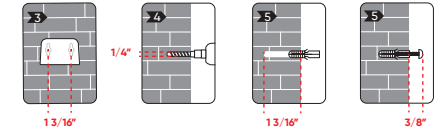
-  **Solid red light**  
Livestream is being viewed or a recording is in progress
-  **Quickly flashing red light**  
Siren is in use
-  **Solid blue light**  
The device is working properly and no operations are running

## WALL MOUNT

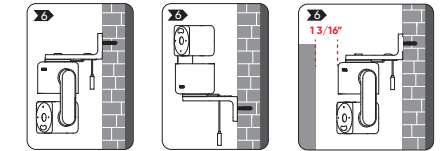
- Use a screwdriver to tighten the short Top screw on the bottom of the Cam Pan v4 with the Wall Bracket.
- Pass the cable through the bracket to secure it.



- Affix the Mounting Sticker at your desired installation location and mark the positions of the holes.  
Note: The two holes should be exactly 1 3/16" apart.
- Drill holes with a 1/4" drill bit, then insert the anchors.  
Note: If installing on a wooden surface, you can screw in directly with wall screws. Do not fully tighten the screws at this stage. Leave a 3/8" gap for the bracket to hang from.
- Insert the expansion tubes into the drilled holes. Then screw in the wall screws, do not tighten the screws at this stage. Leave a 3/8" gap between the screw head and the wall for the bracket to hang from.



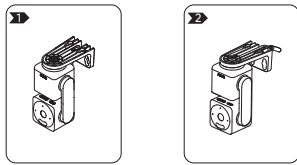
- Hang the Wall Bracket and Cam Pan v4 onto the screws, then tighten the screws to secure everything in place.  
Note: When installing, make sure there's at least 1 3/16" clearance around.



- Insert the power cable into the Type-C port on the camera's tail cable, and plug the USB end into the power adapter.

## CEILING MOUNT

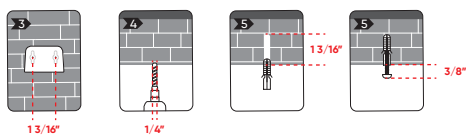
- Use a screwdriver to tighten the screw on the bottom of the Cam Pan v4 with the Wall Bracket.
- Pass the cable through the bracket to secure it, as shown.



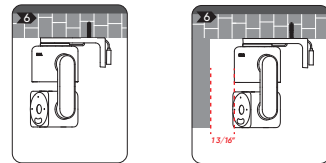
- Affix the Mounting Sticker at your desired installation location and mark the positions of the holes.  
Note: The two holes should be exactly 1 3/16" apart.

- Drill holes with a 1/4" drill bit, then insert the anchors.  
Note: If installing on a wooden surface, you can screw in directly with wall screws. Do not fully tighten the screws at this stage. Leave a 3/8" gap for the bracket to hang from.

- Insert the expansion tubes into the drilled holes. Then screw in the wall screws, do not tighten the screws at this stage. Leave a 3/8" gap between the screw head and for the bracket to hang from.



- Hang the Wall Bracket and Cam Pan v4 onto the screws, then tighten the screws to secure everything in place.  
Note: When installing, make sure there's at least 1 3/16" clearance around.



- Insert the power cable into the Type-C port on the camera's tail cable, and plug the USB end into the power adapter.  
Operating Temperature: -4°F - 122°F (-20°C - 50°C)

## FCC WARNING:

Any changes or modifications not expressly approved by the party responsible for compliance could void the user's authority to operate this equipment. This device complies with part 15 of the FCC Rules. Operation is subject to the following two conditions: (1) This device may not cause harmful interference, and (2) This device must accept any interference received, including interference that may cause undesired operation. This equipment has been tested and found to comply with the limits for a Class B digital device, pursuant to Part 15 of the FCC Rules. These limits are designed to provide reasonable protection against harmful interference in a residential installation. This equipment generates, uses, and can radiate radio frequency energy and, if not installed and used in accordance with the instructions, may cause harmful interference to radio communications. However, there is no guarantee that interference will not occur in a particular installation. If this equipment does cause harmful interference to radio or television reception, which can be determined by turning the equipment off and on, the user is encouraged to try to correct the interference by one or more of the following measures:

- Reorient or relocate the receiving antenna.
- Increase the separation between the equipment and receiver.
- Connect the equipment into an outlet on a circuit different from that to which the receiver is connected.
- Consult the dealer or an experienced radio/TV technician for help.

## FCC RADIATION EXPOSURE STATEMENT:

This equipment complies with FCC radiation exposure limits set forth for an uncontrolled environment. This equipment should be installed and operated with minimum distance 20 cm between the radiator & your body. This transmitter must not be co-located or operating in conjunction with any other antenna or transmitter.


## ISED RSS WARNING:

This device complies with ISED licence-exempt RSS standard (s). Operation is subject to the following two conditions: (1) this device may not cause interference, and (2) this device must accept any interference, including interference that may cause undesired operation of the device.

## ISED RADIATION EXPOSURE STATEMENT:

This equipment complies with ISED RF radiation exposure limits set forth for an uncontrolled environment. This transmitter must not be co-located or operating in conjunction with any other antenna or transmitter. This equipment should be installed and operated with minimum distance 20 cm between the radiator & your body. Any changes or modifications not expressly approved by the party responsible for compliance could void the user's authority to operate the equipment.

- (i) the device for operation in the band 5150-5250 MHz is only for indoor use to reduce the potential for harmful interference to co-channel mobile satellite systems;
- (ii) the maximum antenna gain permitted for devices in the bands 5250-5350 MHz and 5470-5725 MHz shall comply with the e.i.r.p. limit; and
- (iii) the maximum antenna gain permitted for devices in the band 5725-5825 MHz shall comply with the e.i.r.p. limits specified for point-to-point and non point-to-point operation as appropriate.

-  The power adapter provided with this product is for indoor use only. The top of Wyze Pan Cam v4 may get warm to the touch while in use - this is normal. When moving the device, hold it from the camera's base for safe handling.

## WARRANTY

Your Wyze product is covered by a one-year limited warranty. You can view the limited warranty terms at <https://wyze.com/return-warranty-policy> or request a copy by contacting Wyze at +1 (206) 339-9646.

Wyze and Wyze Cam Pan v4 are trademarks of Wyze Labs, Inc.

## NEED HELP?

Contact our Support Team:  
<https://wyze.com/support>  
 Join the Community:



Scan the QR code to learn more